

Digital Microscope

MDC-3492 DUAL HDMI & USB MICROSCOPE DIGITAL CAMERA

- HDMI & USB Dual Image Output
- Unique Designed Manual Focusing Knob on Camera
- High Quality 3.5M CMOS Sensor
- C-Mount & Eyepiece Tube Connect All Kinds Microscopes
- Professional Analysis Software Support
2 Split /4 Split Windows



Hardware Configuration

Imaging Sensor	Aptina AR0330 CMOS Sensor
Scan Mode	Scan line by line
The maximum resolution	2304 x 1535(3,538,944 pixels)
Sensor Optical Format	1/3" (5.07mm(H) x 3.38mm(V), Diagonal 6.09mm)
Pixel Size	2.2μm x 2.2μm
Dynamic Range	69.5dB
ADC	12-bit, 8-Bit R.G.B to PC
SNR(Signal Noise Ratio)	39dB
Spectral Characteristics	380-650nm
Video Mode Resolution	1080P@30FPS, 720P@30FPS,WVGA@30FPS
Snapshot Mode Resolution	2304x1536, 2304x1296, 1920x1080, 1280x720, 800x480
Exposure Capability	Real-time auto, Single auto, Manual adjustment
White Balance	Real-time auto, Single auto, Manual adjustment
Capture Modes	Picture
Record Route	The local and TF card

Interface Parameter

Camera Interface	C mount thread (1"x1/32) BFL: 11.6-36mm
Wired Picture Interface	HDMI Model: Mini HDMI
	USB Model: Micro USB
Charger Interface	Micro USB, DC5.0V 2A

Software Environment	
Operation System	Microsoft®Windows®XP/7/8/8.1/10(32&64 bit)
Computer Configuration	CPU: equal or more than the second generation Intel core 2.8GHz
	Memory: 2G or more
	USB port: USB2.0 high speed port or compatible port
	Displayer: Suggest 17 inches or larger

Operating Environment	
Operating Temperature	0°C~ 40°C
Storage Temperature	-20°C~ 60°C
Operating Humidity	30~60%RH
Storage Humidity	10~80%RH



MDC-3492B DUAL HDMI & USB MICROSCOPE DIGITAL CAMERA

- HDMI & USB Dual Image Output
- Extra Hard Industrial Metal Housing
- 2.1M Super Wide Dynamic CMOS Sensor
- Standard C-Mount For Microscope Use
- Professional Analysis Software Included

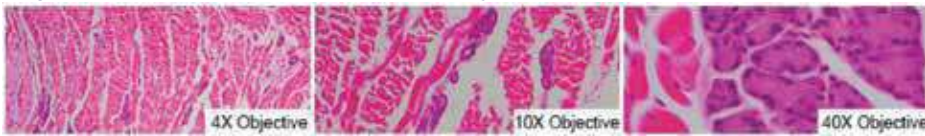


MDC-3492B HDMI Camera Eyepiece	
Hardware Configuration	
Imaging Sensor	SONY CMOS IMx291 super wide dynamic CMOS sensor
Expose Mode	Rolling Shutter
The Maximum Resolution	2.1M 1920 x 1080(2,073,600 Pixels)
Sensor Optical Format	1/2.8" (6.058mm(H) x 4.415mm(V))
Pixel Size	2.9μm x 2.9μm
Dynamic Range	128dB
ADC	12-bit, 8-Bit R.G.B to PC
SNR Max	30dB
Spectral Characteristics	380-650nm
Exposure Capability	Real-time auto, Single auto, Manual adjustment
White Balance	Real-time auto, Single auto, Manual adjust R G B separately
HDMI Output Resolution	1920x1080P60, 1920x 1080P50, 1920x 1080P30, 1920x 1080P25, 1920x 1080I60,
Record Format	Snapshot
Record Route	TF Card(Maximum support 128G, support hot plug)
Interface Parameter	
Camera Interface	C mount thread (1"x1/32)
Wired Picture Interface	HDMI TYPE C Mini HDMI
Charger Interface	Micro USB, DC5.0V (Maximum current 1A)
Software Environment	
Displayer	Recommend 16:9, at least 1080P HD displayer

Operating Environment	
Operating Temperature	0°C~ 40°C
Storage Temperature	-20°C~ 60°C
Operating Humidity	30~60%RH
Storage Humidity	10~80%RH

APPLICATION AND CASE

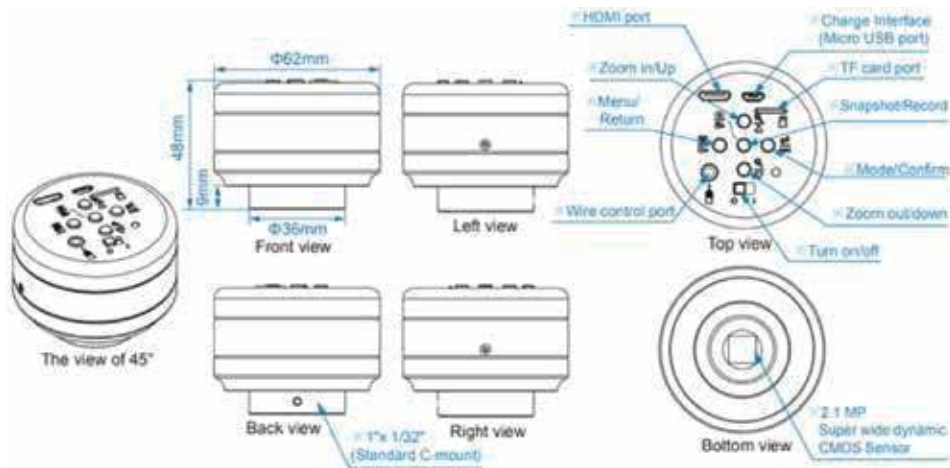
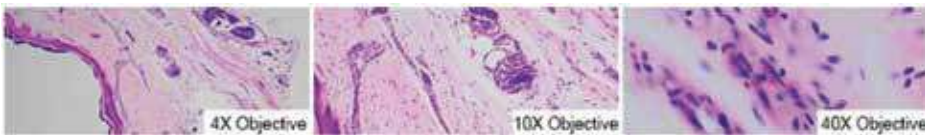
Dog taste buds sections under different objective



Butterfly wing slice under different objectives



Human skin sweat gland section under different objectives



MDC-3494 MICROSCOPE CAMERA

- 5.0MP High Quality CMOS Sensor
- USB 2.0 Connection, Standard C-Mount
- 720HD Video Up To 30fps
- Capturing Software, Free Driver Included



Hardware Configuration	
imaging sensor	Colorful
scan patterns	Scan line by line
The maximum resolution	2592 x 1944(5,038,848 pixels)
Sensor Optical Format	1/2.5" (5.70mm(H) x 4.28mm(V), Diagonal 7.13mm)
Pixel Size	2.2μm x 2.2μm
Dynamic Range	70.1dB
ADC	12-bit, 8-Bit R.G.B to PC
SNR(Signal Noise Ratio)	38.1dB
Spectral Characteristics	380-650nm
Preview modes	10FPS@2592x1944,
Binning Modes	1 x 1, 2 x 2
Exposure Capability	3.9ms - 320ms, automatic and manual
White Balance	automatic and manual
Software Interface	DirectShow
Capture modes	Picture
Software Environment	
Operation system	Microsoft® Windows® XP / 7 / 8 / 8.1/10(32 & 64 bit)
Computer Configuration	CPU: equal or more than the second generation Intel core 2.8GHz
	memory:2G or more
	USB port:USB2.0 high speed port or compatible port
	displayer:suggest 17 inches or larger
Operating Environment	
operating temperature	0°C~ 40°C
storage temperature	-20°C~ 60°C
operating Humidity	30~80%RH
Storage Humidity	10~60%RH



MDC-3495 DUAL WIFI & USB MICROSCOPE DIGITAL CAMERA

- 5.0MP High Sensitive CMOS Sensor
- WIFI Mode Connect Mobile Phone, Tablet, iPad, PC Freely
- USB 2.0 For Data High Speed Transfer
- C-Mount & Eyepiece Tube Connect All Kinds Microscopes
- Professional Analysis Software Support 2 Split/ 4 Split Windows.



	MDC-3495	MDC-3495M	MDC-3495-M05
Package size	Single weight :1.23kg, dimension: 30x 23x 11cm		
Connecting	C-Mount	C-Mount, Adapter Ring 1.0x/23.2mm Adapter Ring 30mm Adapter Ring 30.5mm	C-Mount, Adapter Ring 0.5x/23.2mm Adapter Ring 30mm Adapter Ring 30.5mm
Sensitive Chip	1/2.5" true color CMOS (5.70mm(H) x 4.28mm(V), diagonal7.13mm)		
Scan Mode	Progressive		
Pixel Size	2.2μm x 2.2μm		
Resolution	Max: 2592 x 1944(5,038,848 Mega Pixel)		
A/D switch	12-bit on chip,10-bit to pc		
Dynamic Range	70.1dB		
SN Ratio	38.1dB		
Working Modes	A.USB mode		
	B.WiFi mode		
Image format Frame rate	YUV output: 640x480@30fps,800x600@20fps,1280x960@10fps,1280x720@10fps,2592x1944@5fps MJPEG output : 640x480@40fps,800x600@40fps,1280x960@40fps,1280x720@40fps,2592x1944@15fps		
Exposure way	3.9ms - 320ms,Wide range auto/manual exposure		
White Balance	Automatic White Balance/Automatic Exposure		
Focus mode	Manual fine adjust, big range auto-focus		
Snapshot control API	Native C/C++, C#, Direct Show, UVC		

Observe methods	Still picture and video in real time
Spectral region	380-650nm (with IR-cut Filter)
Wireless parameters	wireless protocol: IEEE 802.11b/g/n frequency range:2.4000--2.4835GHz transmit bandwidth :150Mbps
Power supply	Built-in lithium battery(4500 mAh); DC 5V USB power supply by PC; External DC 5V 1.5A adapter
OS requirement	Microsoft® Windows® XP / Vista / 7 / 8 (32 & 64 bit) MAC OS X (wireless working mode) IOS5/IOS6 (wireless working mode)
Hardware requirement	CPU: equivalent to Intel Core2 1.6GHz or higher Memory :2GB or higher USB port :USB2.0 High-speed port DVD-ROM(required when installing software)
Software Language	Chinese, English, Japanese,Swedish,Deutsch, accept OEM languages
Operating System	Microsoft Windows XP / Vista / 7 (32 & 64 bit) CPU: Equal to Intel Core2 2.8GHz or Higher Memory:2GB or More and CD-ROM
Operation Software	Windows: Micro Cam; Android & IOS: Ucam



MDC-3497 DUAL WIFI & USB MICROSCOPE DIGITAL CAMERA

- 5.0MP High Sensitive CMOS Sensor
- WIFI Mode Connect Mobile Phone, Tablet, iPad, PC Freely
- USB 2.0 For Data High Speed Transfer
- Professional Analysis Software Support
 2 Split / 4 Split Windows
- Universal Adapter Rings Fits On All Kinds
 Of Eyepiece Dia.20-46mm



MDC-3497	
Hardware Configuration	
Scan Mode	Scan Line By Line
Maximum Resolution	5.0M, 2592 x 1944 (5,038,848 Pixels)
Sensor Optical Format	1/4"
Pixel Size	1.4μm x 1.4μm
Dynamic Range	68dB
ADC	12-Bit, 8-Bit R.G.B to PC
SNR	38.1dB
Spectral	380-650nm
Maximum Transmission Frame Rate (USB Mode)	10FPS@2592x1944 15FPS@1920x1080, 1600x1200, 1280x1024 30FPS@1280x960, 1280x720, 1024x768, 800x600, 640x480
Maximum Transmission Frame Rate (WiFi Mode)	10FPS@2592x1944 15FPS@1920x1080, 1600x1200, 1280x1024 30FPS@1280x960, 1280x720, 1024x768, 800x600, 640x480
Binning Modes	2 x 2
Exposure Capability	3.9ms - 320ms, Automatic And Manual
White Balance	Automatic And Manual
Software Interface	DirectShow



Capture Modes	Picture Resolution : 2592x1944, 1920x1080, 1600x1200,1280x1024, 1280x960, 1280x720, 1024x768, 800x600, 640x480 Format : JPG,BMP,PNG,TIFF,PDF
	Video Resolution : 1920x1080, 1600x1200, 1280x1024, 1280x960, 1280x720, 1024x768, 800x600, 640x480 Format : MJPG Format AVI File

Interface Parameters

Illumination Input Interface	USB (A FEMALE NUT), DC5.0V, Maximum 1.0A
Wired Picture / Charger Interface	Micro USB Interface USB2.0 DC5.0V 500mA (Wired Picture) USB 2.0 DC5.0V 2A (When Charging Power)
Display/ Special Illumination	Hot Shoe(No Electrical Connection)
Camera Interface	C Port, And It Can Customize Other Ports

Wireless Parameter/Power Parameter

Standard	802.11b/g/n
Operating Frequency Range	2.400 ~ 2.4835GHz (Subject To Local Regulations)
Available Channels	802.11n 20MHz/40MHz
	802.11b/g
	USA, Canada (FCC):11 Channels (2.412GHz~2.462GHz)
	Europe (CE): 13 Channels (2.412GHz~2.472GHz)
Data Rate	Japan (TELEC): 14 Channels (2.412GHz~2.4835GHz)
	802.11n: up to 300Mbps 2T2R
	802.11b: up to 11Mbps
Transmission Power	802.11g: up to 54Mbps
	11n HT40 MCS7 : +16dBm +/-1.5dBm
	-61 dBm@10% PER at HT40 MCS7
Receiving Sensitivity	-68 dBm@10% PER at 54Mbps
	-85 dBm@10% PER at 11Mbps
	10@640x480
Suggestion On Number Of Receiver On Different Resolution	8@800x600
	6@1024x768
	5@1280x720
	5@1280x960
	4@1920x1080
	3@2592x1944
	Operating Humidity
Storage Humidity	10~60%RH



The Wireless Work Instructions	When There Has Not WiFi, LED Lamp Turn Of
	When WiFi Is Opened But Do Not Connect, LED Is Always Lighting
	When WiFi Is Connected, LED Flashes At The Beginning And Stay Turn On Afterward
	When WiFi Is Connected, LED Flashes, About Once Per Second, The Greater The Amount Of Data The Faster It Flashes, And It Is About 10 Times Per Second
Build In Battery	3.7V, 5000mAh, 26650 Rechargeable Lithium Coin Cells
Continuous Working Period	About 8 Hours
Display/ Special Illumination	Hot Shoe(No Electrical Connection)
Charging Time	About 4 Hours
Charge lamp, (Internal Battery)	Having Problems In Charging : Charge Lamp, Red Light Flashes Once Per 0.5 Second
	Low Battery : Charge Lamp, Green Light Breathes Once Per 1 Secon
	Medium Battery : Charge Lamp, Green Light Breathes Once Per 2.5 Seconds
	High Battery : Charge Lamp, Green Light Breathes Once Per 4Seconds
	Fully Charged : Charge Lamp, There Will Be Always Green Light
Power Lamp, (Internal Battery)	When Power Quantity More Than 20% : Power Lamp, There Will Be Always Green Light
	When Power Quantity Lower Than 20% : Power Lamp, There Will Be Always Red Light
	When Power Quantity Lower Than 5% : Power Lamp, It Will Turn Off After Flashing 10 Seconds
Charge Cycle	500 Times @50% Power
Power-up	Wired : Direct-current 5V, Power By USB Cable
	Wireless: Internal Battery
	Charge Power: DC 5V 2A Power Plug
Software Environment	
USB Work Mode	
Windows System Demand	Microsoft® Windows® XP/ 7 / 8 /8.1/10(32 & 64 bit)
	CPU: Equal Or More Than The Second Generation Intel Core 2.8GHz
	Memory: 2G Or More
	DVD-ROM (Need It During Installing Software)
WiFi Work Mode	
Windows System Demand	Microsoft® Windows® XP/ 7 / 8 /8.1/10(32 & 64 bit)
	CPU: Equal Or More Than The Second Generation Intel Core 2.8GHz
	Memory: 2G Or More
	Internal Wireless Network Card

iOS System Demand	iOS6.0 Or Higher
Android System Demand	Android3.0 Or Higher
	CPU: Dual-core 1.7GHz Or Higher
	RAM Memory : 1G Or More
	Storage ROM : Suggest 8G Or Larger
Operating Environment	
Operating Temperature	0°C~ 40°C
Storage Temperature	-20°C~ 60°C



MDC-3498 DUAL WIFI & USB MICROSCOPE DIGITAL CAMERA

- 5.0MP High Sensitive CMOS Sensor
- WIFI Mode Connect Mobile Phone, Tablet, iPad, PC Freely
- USB 2.0 For Data High Speed Transfer
- C-Mount & Eyepiece Tube Connect All Kinds Microscopes
- Professional Analysis Software Support 2 Split / 4 Split Windows
- Extra Hard Industrial Metal Housing



Hardware Configuration	
Image Sensor	APTINA MT9P001 CMOS(colorful)
Expose mode	Rolling shutter
Maximum Resolution	2592 x 1944 (5,038,848 pixels)
Sensor Optical Format	1/2.5" (5.70mm(H) x 4.28mm(V), Diagonal 7.13mm)
Pixel Size	2.2μm x 2.2μm
Dynamic Range	70.1dB
ADC	12-bit, 8-Bit R.G.B to PC
SNR (Signal Noise Ratio)	38.1dB
Spectral Characteristics	380~650nm (during daytime mode)
Binning Modes	1 x 1, 2 x 2
Exposure Capability	Real-time auto, Single auto, Manual adjustment
White Balance	Real-time auto, Single auto, Manual adjustment
Software Interface	DirectShow
Maximum Transmission Frame Rate (USB mode)	10FPS@2592x1944 15FPS@1920x1080,1600x1200 40FPS@1280x960, 1280x720, 1024x768, 800x600, 640x480
Maximum Transmission Frame Rate (WiFi mode)	10FPS@2592x1944 15FPS@1920x1080,1600x1200 40FPS@1280x960, 1280x720, 1024x768, 800x600, 640x480
Record format	Snapshot Picture Format : JPG,BMP,PNG,TIFF,PDF Resolution : 2592x1944, 1920x1080, 1600x1200, 1280x960, 1280x720, 1024x768, 800x600, 640x480 Record Video Format : MJPG format AVI file Resolution : 1920x1080, 1600x1200, 1280x960, 1280x720, 1024x768, 800x600, 640x480



Interface Parameters	
Wired picture	Micro USB interface; USB2.0 DC5.0V 500mA (wired picture)
Wireless Parameter/Power	
Standard	802.11b/g/n
Operating Frequency Range	2.400 ~ 2.4835GHz
Available Channels	802.11n 20MHz/40MHz
	802.11b/g
	USA, Canada (FCC):11 Channels (2.412GHz~2.462GHz)
	Europe (CE): 13 Channels (2.412GHz~2.472GHz)
	Japan (TELEC): 14 Channels (2.412GHz~2.4835GHz)
Data Rate	802.11n: up to 150Mbps 1T1R
	802.11b: up to 11Mbps
	802.11g: up to 54Mbps
Transmission Power	11n HT40 MCS7 : +16dBm +/-1.5dBm
Receiving Sensitivity	-61 dBm@10% PER at HT40 MCS7
	-68 dBm@10% PER at 54Mbps
	-85 dBm@10% PER at 11Mbps
Suggestion On Number Of Receiver On Different Resolution	10@640x480
	8@800x600
	6@1024x768
	5@1280x720
	5@1280x960
	4@1920x1080
	3@2592x1944
The Wireless work instructions	When there has not WiFi, LED lamp turn off When WiFi is opened but do not connect, LED is always lighting When WiFi is connected, LED flashes at the beginning and stay turn on When WiFi is connected, LED flashes, about once per second, The
Power-up	Wired : direct-current 5V, power by USB cable Wireless: DC 5V 2A power plug
Software Environment	
USB Work Mode	
Windows System Demand	Microsoft® Windows® XP/ 7 / 8 /8.1/10(32 & 64 bit)
	CPU: Equal Or More Than The Second Generation Intel Core 2.8GHz
	Memory: 2G Or More
	DVD-ROM (Need It During Installing Software)

MDC-3491 MICROSCOPE CAMERA

- High Resolution, 5.0Mega Pixels.
- USB 2.0 Connection.
- CCD Camera Theory.



MDC-3491 Microscope Camera	
Hardware Configuration	
Imaging Sensor	Colorful
Scan Patterns	Scan Line By Line
The Maximum Resolution	5.0M, 2592 x 1944(5,038,848 Pixels)
Sensor Optical Format	1/2.5" (5.70mm(H) x 4.28mm(V), Diagona 7.13mm)
Pixel Size	2.2μm x 2.2μm
Dynamic Range	70.1dB
	12-bit, 8-Bit R.G.B to PC
SNR Max	38.1dB
Spectral Characteristics	380-650nm
Preview Modes	10FPS@2592x1944,
	15FPS@1920x1080, 1600x1200
	40FPS@1280x960, 1280x720, 1024x768, 800x600, 640x480
Binning Modes	1 x 1, 2 x 2
Exposure Capability	3.9ms - 320ms, Automatic And Manual
White Balance	Automatic And Manual
Software Interface	Direct Show
Capture Modes	Photos And Videos (MJPEG and AVI)
Software Environment	
Operation System	Microsoft®Windows®XP / 7 / 8 /8.1/10(32 & 64 bit)
Computer Configuration	CPU: Equal Or More Than The Second Generation Intel Core 2.8GHz
	Memory: 2G Or More
	USB Port: USB2.0 High Speed Port Or Compatible Port
	Displayer: Suggest 17 Inches Or Larger

Regulatory compliances



Corporate Social Responsibility

Analytical Foundation is a nonprofit organization (NGO) found for the purpose of:



Analytical
Foundation

1. Research & Innovation Scientist's awards/QC Professional Award : Quality life is possible by innovation only and the innovation is possible by research only, hence ANALYTICAL FOUNDATION is committed to identify such personalities for their contributions across various field of Science and Technology and awarding them yearly. To participate for award, send us your details of research / testing / publication at Info@analyticalfoundation.org

2. Improving quality of life by offering YOGA Training courses, Work shops/Seminars etc.

3. ANALYTICAL FOUNDATION aims to DETOXYFY human minds,souls and body by means of yoga, Meditation, Ayurveda, Health Care, Awards, Media, Events, Camps etc.

Reach us @



HPLC Solutions MultipleLabs Analytical Bio-Med Analytical Distributors Analytical Foundation (Trust)

Corporate & Regd. Office:
Analytical House, # E67 & E68,
Ravi Park, Vasna Road, Baroda,
Gujarat 390 015. INDIA

T: +91 265 2253620
+91 265 2252839
+91 265 2252370
F: +91 265 2254395

E: info@hplctechnologies.com
info@multiplelabs.com
info@analyticalgroup.net
info@analyticalbiomed.com

W. www.analyticalgroup.net
www.hplctechnologies.com
www.multiplelabs.com
www.ais-india.com

Sales & Support Offices:
across the country :
Distributors & Channel
partners World Wide